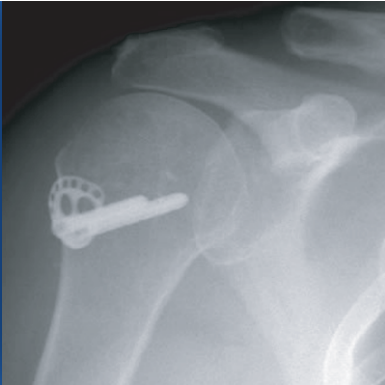


Never send a boy...



...to do a man's job.



Introducing the **Cuff Repair Plate (CRP)**<sup>™</sup> from Shoulder Options, Inc.



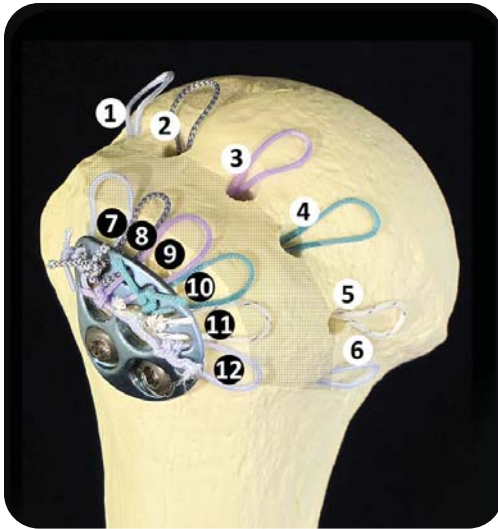
The **CRP** is the **first fixable suture anchor plate**. It is intended for augmentation of transosseous rotator cuff repair, especially in massive tears and reruptures in proximity to osteopenic bone. The **CRP** provides **multiple suture tying points from a single device** designed to **improve anchorage-to-bone strength** during cuff repair surgery.\*

For more information, including surgical technique videos, visit us online at [www.shoulderoptions.com](http://www.shoulderoptions.com)

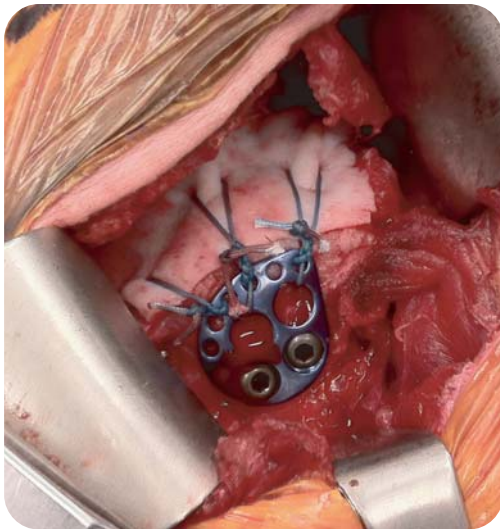
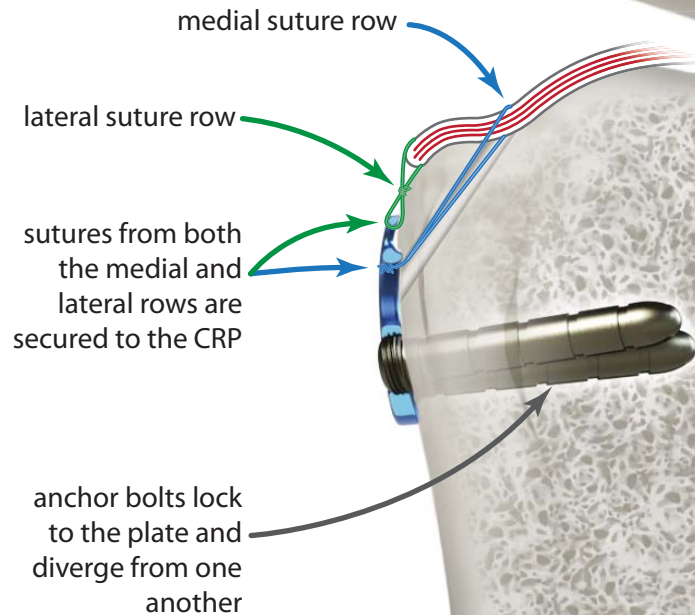
\* Humphrey CS; Brown TC; Kuhlman S; Sabick MB: The Fixable Suture Anchor Plate: A Mechanical Comparison to Other Devices Commonly Used for Tendon Anchorage to Bone during Rotator Cuff Repair Surgery. Orthopreneur. May/June: 40-46, 2010.

 **shoulder options**<sup>™</sup>

## cuff repair plate™



Multiple holes in the plate serve as tying points for suture.



The contoured shape of the CRP conforms to the anatomy of the lateral proximal humerus.



*actual size*

### Case Example:

Above photo shows the final repair construct for a revision cuff repair that involved retearing of both the supraspinatus and infraspinatus tendons. Large cysts were present in the greater tuberosity where bioabsorbable suture anchors had been placed during the index procedure. The bony defects were filled with bone graft, and a biologic patch was used to augment the tendons.